



# Piha me ka Hau'oli

Full of Happiness

Hawai'i Meals on Wheels

Honolulu, Hawai'i

Summer 2015

## September Spooktacular: Let the Fun Begin!

**F**or more than 35 years, Hawai'i Meals on Wheels has been a source of comfort and hope to those who are homebound in our community.

Last year, Hawai'i Meals on Wheels volunteers delivered more than 88,000 hot, nutritious meals to homebound neighbors, the majority of whom are 60 years old or more. As Hawaii's senior population grows, the need for home-delivered meals also grows.

That's why our annual fundraiser is so important: it allows us to continue our meal delivery operations. Each year, Hawai'i Meals on Wheels pulls out all the stops to create a rewarding, memorable experience for all of our gala guests.

By popular demand, this year our theme once again will be **September Spooktacular**. It will be a bewitching evening of fun and networking as we transform the entire restaurant into a delightful, excitement-filled masquerade party.

### Non-Stop Excitement

A devilish "Wall of Wine & Spirits," hauntingly spectacular entertainment in the courtyard, an eerie silent auction, and a haunted



**VAMPIRES!** The Kahala Nui team snatched first place in the "Best Table" category of the costume contest at last year's September Spooktacular. Dress up...you and the guests at your table could be this year's winners!

---

**September Spooktacular**  
**The Willows Restaurant**  
**Thursday, Sept. 24, 2015**  
**5:30 pm – 9:30 p.m.**

---

castle store brimming with fresh produce and other treats at wick-edly low prices will all be waiting for you.

Back by request, there will be casino games in the chapel, deep tissue massages, psychic readings, and much more. We'll also have prizes for the best individual costume and best costumes by

table, so mark your calendar and get ready to put your best mask forward!

### Don't Miss the Fun!

Be sure see the sponsorship form on page 3 of this newsletter. Please complete the form and send it back to Hawai'i Meals on Wheels today.

If you would like to donate items for our silent auction, call the Hawai'i Meals on Wheels office at (808) 988-6747 today. For your convenience, we'll make arrangements to pick them up from you!

# Bank of Hawaii Supports Hawai'i Meals on Wheels

This year, Bank of Hawaii employees voted Hawaii Meals on Wheels one of the top three local nonprofit organizations to receive their support.

As a result, Hawai'i Meals on Wheels received a generous por-

tion of the proceeds from Bank of Hawaii's annual Live Kokua Community Walk, held in April 2015. More than 1,200 employees and their family members participated in the walk.

"It is such a great feeling to be surrounded by caring people who want to share in our mission of helping those in communities across Oahu," said **Claire Shimabukuro**, Executive Director of Hawai'i Meals on Wheels.

**Donna Tanoue**, President of the Bank of Hawaii Foundation recently presented Hawai'i



## Bank of Hawaii

Meals on Wheels with a check for \$35,419. Since 2013, Bank of Hawaii has given Hawai'i Meals on Wheels a cumulative total of nearly \$170,000!

Mahalo to Bank of Hawaii and all of its generous employees to help our kupuna and others who are homebound!

## Piha Hau'oli

(Full of Happiness)

is a publication for supporters of Hawai'i Meals on Wheels.

We deliver hot meals and warm aloha to ensure all of our recipients are full of happiness.

## Our Mission

Hawai'i Meals on Wheels, Inc., a private, not-for-profit 501(c)3 organization, is dedicated to helping Oahu's elders and individuals with disabilities preserve their independence at home. We do this by providing hot, nutritious meals and regular, personal interaction with those we serve

## Board of Directors

President

**Geoffrey Pang**

*American Business Marketing*

Vice-President

**Tyler Street**

*Savio and Associates*

Secretary

**Joanne Kealoha**

*ILWU Local 142*

Treasurer

**Donna Ojiri**

*Sodexo at the University of Hawai'i*

**Anna Derby Blackwell**

*Delivery Volunteer*

*Retired Public Relations Executive*

**Lella E. Migita**

*Retired Educator*

**Rickey Murashige**

*Kuakini Health Systems*

**Theo Stiller**

*Wealth Strategy Partners, LLC*

**Irmgard Hörmann**

*Emerita*

## International Symposium on Senior Food

Making changes on a global scale often starts with what has been successful at the local, grassroots level. That is one of the reasons the Korea Food Research Institute invited **Claire Shimabukuro**, Executive Director of Hawai'i Meals on Wheels, to present her perspectives on food insecurity at its international symposium in Seoul, Korea on May 28, 2015.

The conference theme was "Foods

for the Elderly" and Claire successfully provided insights on home meal deliveries in the U.S., using Hawai'i Meals on Wheels as a model.

"It was a wonderful honor to have Meals on Wheels America represented at a world symposium. I know Claire represented us well with her years of expertise," said **Ellie Hollander**, President and CEO of Meals On Wheels America.

## Mahalo to Our Mission-Focused Volunteers

What would our community be like without the generous support of Hawai'i Meals on Wheels volunteers?

Our volunteers do much more than deliver hot, nutritious meals. They also take the time to listen to clients,

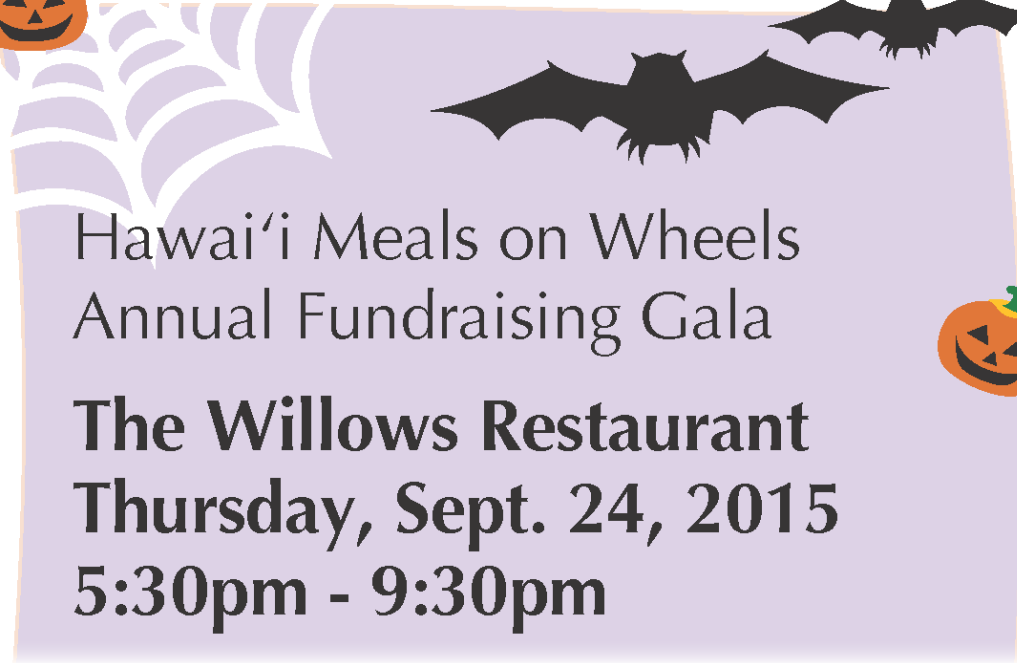
and provide an additional set of eyes and ears to observe any other spoken or unspoken needs to make appropriate recommendations to ensure everyone we touch enjoys a safe and secure quality of life.

Mahalo to all of our volunteers!



**September SPOOKTACULAR**

**Sponsorship & Donation Form**



# Hawai'i Meals on Wheels Annual Fundraising Gala

## The Willows Restaurant Thursday, Sept. 24, 2015 5:30pm - 9:30pm

**I would like to be a part of the September Spooktacular and support Hawai'i Meals on Wheels!**

**Table Sponsorships:**

**Magnificent Monster Sponsorship: \$5,000**

- 8 tickets (1 Table) to September Spooktacular
- Recognition at September Spooktacular
- Featured in HMoW newsletter and website
- Recognition in September Spooktacular printed program

**Generous Goblin Sponsorship: \$2,500**

- 8 tickets (1 Table) to September Spooktacular
- Recognition in September Spooktacular printed program

**Black Cat (Individual Tickets): \$150/ticket**

- Recognition in September Spooktacular printed program

I would like to purchase:

\_\_\_ tables at \$5,000 each = \$ \_\_\_\_\_

\_\_\_ tables at \$2,500 each = \$ \_\_\_\_\_

\_\_\_ individual tickets at \$150 each = \$ \_\_\_\_\_

**Phantom Donors:**

I cannot attend but would like to make a donation:

\$ \_\_\_\_\_

*Donations will be acknowledged in the event program.*

**Credit Card Information:**

Table sponsorships, ticket purchases, and donations made by credit cards are welcome.

Name (on card) \_\_\_\_\_

Card number \_\_\_\_\_

Exp. date \_\_\_ / \_\_\_     Visa     MasterCard

Signature \_\_\_\_\_

Organization: \_\_\_\_\_

Contact Person: \_\_\_\_\_ Title: \_\_\_\_\_

Address: \_\_\_\_\_ City: \_\_\_\_\_ Zip: \_\_\_\_\_

Phone: \_\_\_\_\_ Fax: \_\_\_\_\_ Email address: \_\_\_\_\_



Please make checks payable to: Hawai'i Meals on Wheels. Please mail this form to: Hawai'i Meals on Wheels at P.O. Box 61194, Honolulu, Hawai'i 96839-1194 or fax to 988-5719 or email to [hmoWGala@hawaii.rr.com](mailto:hmoWGala@hawaii.rr.com).

Hawai'i Meals on Wheels is a private, not-for-profit 501(c)(3) organization. All financial contributions are tax deductible to the fullest extent under the law. Acknowledgement letters will document amount that is tax deductible. Questions? Call 988-6747.

**Your response by September 4, 2015 is appreciated. Mahalo!**



Hawai'i Meals on Wheels  
 P.O. Box 61194  
 Honolulu Hawai'i 96839-1194

Phone: 808.988.6747  
 Fax: 808.988.5719  
 Email: hmow@hawaii.rr.com  
 Website: www.hmow.org

NON-PROFIT ORG.  
 U.S. POSTAGE  
**PAID**  
 HONOLULU, HI  
 PERMIT NO. 9729

**Return Service Requested**

*Save the date!  
 See sponsorship form inside!*

**September Spooktacular**  
 Thursday, September 24, 2015



#70190

#48796

**Hawai'i Meals on Wheels  
 Office Staff**

**Claire Shimabukuro**  
*Executive Director*

**Deena Ahakuelo**  
*Program Coordinator*

**Carrie Camacho**  
*Administrative Coordinator*

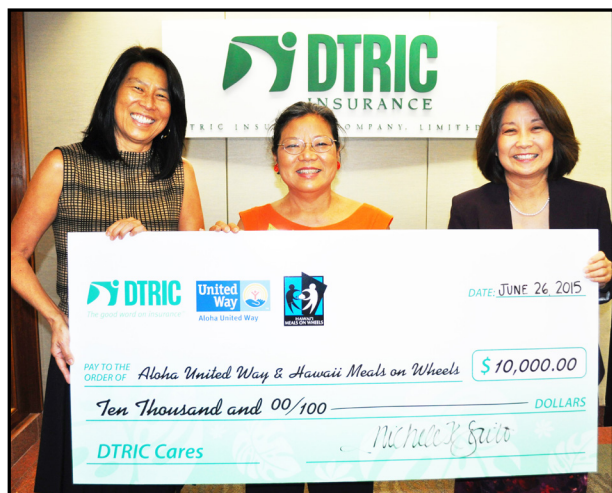
**Julie Teruya**  
*Executive Assistant*

**Joal Murakami  
 Ruth Palmer**  
*Program Assistants*

**Adney Atabay  
 Mike Lundy  
 H. Doug Matsuoka**  
*Delivery Drivers*

**DTRIC Gives \$10,000 to HMoW**

Through a partnership with Aloha United Way, DTRIC Insurance Company, Limited recently gave a generous gift to Hawai'i Meals on Wheels. A UW is DTRIC's year-long charitable giving program.



Throughout the month of May, DTRIC donated \$10 to Hawai'i Meals on Wheels for every insurance quote given. In total, \$10,000 was raised for Hawai'i Meals on Wheels to support local elders and the disabled community, including a \$2,500 gift from DTRIC.

From left: **Cindy Adams**, Aloha United Way President and Chief Executive Officer; **Claire Shimabukuro**, Hawai'i Meals on Wheels Executive Director; and **Michele Saito**, DTRIC Insurance President.